

# Neath the Old Acorn Tree

# SWEET ESTELLE

WORDS BY

C. M. DENISON

MUSIC BY

J. FRED HELF

WRITERS OF

"WHEN THE WHIP-POOR-WILL SINGS, MARGUERITE"  
"I'LL BE WAITING IN THE GLOAMING, SWEET GENEVIEVE"  
"AINT YOU COMING BACK TO OLD NEW HAMPSHIRE, MOLLY"  
"SOME ONE THINKS OF SOME ONE"



5

HITLAND  
MUSIC

PRODUCED BY  
J. F. HELF & CO.  
MUSIC PUBLISHERS



# Neath The Old Acorn Tree, Sweet Estelle.

Lyric by  
C. M. DENISON.

Writers of  
"When The Whip poor will Sings Marguerite."  
"Is There Any Room In Heaven For A Little Girl Like Me"  
"Mamma's Boy," etc.

Music by  
J. FRED HELF.

*Moderato espress.*



'Tis twi - light and the toil of day is o - ver, The  
Out in the gold - en West to - night I'm dream - ing, The

The piano accompaniment for the first vocal line is written for a grand staff in G major. It begins with a piano (*p*) dynamic. The right hand plays a melody of eighth and sixteenth notes, while the left hand provides a harmonic accompaniment with chords and single notes.

cat - tle from the fields are com - ing home, The  
moon shines o'er the moun - tains still and cold, I'm

The piano accompaniment for the second vocal line is written for a grand staff in G major. It continues the harmonic accompaniment from the first line, with the right hand playing a melody of eighth and sixteenth notes and the left hand providing a harmonic accompaniment with chords and single notes.



moon will soon be shin - ing on the clov - er, As  
go - ing East where can - dle lights are gleam - ing, A -

down a qui - et lane a - lone I roam, \_\_\_\_\_ The  
gain to wan - der through the scenes of old, \_\_\_\_\_ The

old mill wheel is si - lent all seems lone - ly, A  
moon - light on the old mill wheel is fall - ing, No

dear girl's wait - ing in the twi - light's glow, \_\_\_\_\_ I  
lov - ing face is wait - ing there for me, \_\_\_\_\_ In



whis - per that I love her, love her on - ly, We  
fan - cy I can hear a sweet voice call - ing, "Dear

part - ed where the wa - ter lil - lies grow.  
heart I'm wait - ing 'neath the a - corn tree?"

## Chorus.

'Neath the old a - corn tree, sweet Es - telle, I'll re - turn, love's old

sto - ry to tell, When the gold of the day turns to gray,



And you list to the old vil - lage bell, ——— Let my

love in your heart ev - er dwell, ——— You may know lit - tle girl all is

well, ——— With a heart ev - er true, I'll re - turn dear to you, 'Neath the

1. old a - corn tree sweet Es - telle. ——— 'Neath the telle. ———  
2. ———

*rall.* *a tempo.*



# TRY THESE OVER ON YOUR PIANO!

## "When You Know You're Not Forgotten by the Girl You Can't Forget"

One of the most fascinating Waltz Ballads in years.

Here is the Chorus of one of the greatest ballads ever written.

When You Know You're Not Forgotten,  
By The Girl You Can't Forget.

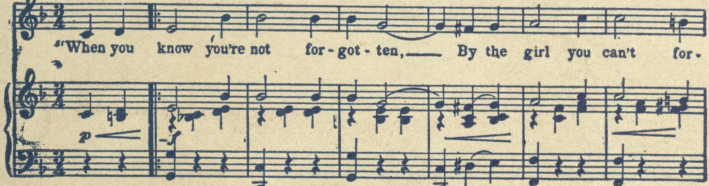
Words by  
ED. GARDENIER.

By Writers of "Someone Thinks Of Someone"  
"Whip-poor-will Sings Marguerite" etc.

Music by  
J. FRED HELF.

Valse moderato.

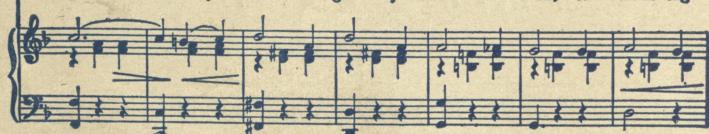
CHORUS.



"When you know you're not for-got-ten, By the girl you can't for-



-get, When you find the girl you left be-hind, Is think-ing



of you yet, Round your heart a feel-ing steal-ing, Comes to



drive a-way re-gret, When you know you're not for-got-ten,



Copyright, 1906, by Helf & Hager Co. Inc. 43 W. 28th St. N.Y.  
English Copyright Secured.



## "FANELLA"

Intermezzo Two-Step.

Mabel McKinley's big song  
hit is adapted from this beauti-  
ful little number.

If you will only play and sing this refrain  
through three or four times, you will then  
understand why it is such a popular favorite.

The melody, the words, the theme, so  
natural and true to life.

TRY THIS OVER ON YOUR PIANO

Meet me Sweet Kathleen in Honeysuckle Time.

Words by  
ROBERT F. RUDEN.

Writers of  
"AINT YOU COMING BACK TO OLD NEW HAMPSHIRE MOLLY"  
"COLLEEN BAWN"  
"WHEN THE WHIP-POOR-WILL SINGS MARGUERITE"

Music by  
J. FRED HELF.

A moderato espress.

CHORUS.



When the hon-ey-suck-les once a-gain are bloom-ing, We will



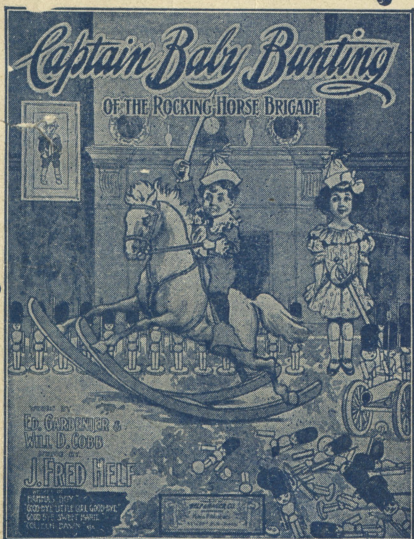
hear the dear old church bell sweet-ly chime In the gloam-ing,



oh, my darl-ing, Meet me sweet Kath-leen in hon-ey-suck-le time.

Copyright 1906 by Helf & Hager Co. Inc. 43 W. 28th St. N.Y.  
English Copyright Secured.

Send for Our Complete Catalogue



## "Captain Baby Bunting of the Rocking Horse Brigade"

Great March Song, by J. Fred Helf.

Brother to "Mamma's Boy"

Mr. Helf has excelled all his previous efforts  
in this number.

On sale where all music is sold, or direct from the publishers, at 25c. each.

**Helf & Hager Co., "HITLAND" 43 West 28th Street,  
NEW YORK CITY.**